

## Socket weld - ANSI B16.11

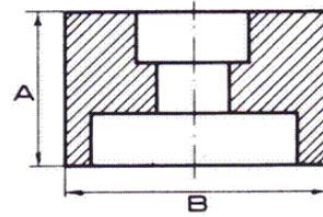


### Crosses - black - 300

\*AN "X" combined with green marking: in stock

\* Red marking: 1 or 2 days

Forged carbon steel fittings to ASTM A105  
Certificates acc. to EN 10204/3.1



Norm. Diam	A		B		Available in	Theor. Weight
inch	mm	inch	mm	inch	Stock	Kg/ea
1"	38	1 1/2	46,5	1 5/6		0,75
2"	60,5	2 3/8	76	3		1,82