

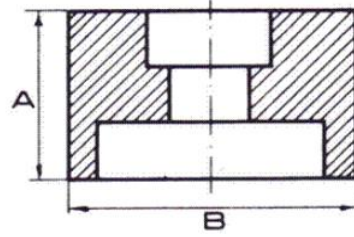
Socket weld - ANSI B16.11



Reducing couplings - black - 3000 lbs

*AN "X" combined with green marking: in stock
 * Red marking: 1 or 2 days

Forgede carbon steel fittings to ASTM A105
 Certificates acc. to EN 10204/3.1



Norm. Diam	A		B		Available in stock		Theor. Weight
	inch	mm	inch	mm	Black	galvan	Kg/ea
1/2" x 1/4"	28,5	1 1/8	31	1 2/9			0,130
1/2" x 3/8"	28,5	1 1/8	31	1 2/9			0,120
3/4" x 1/4"	35,5	1 2/5	36	1 3/7			0,220
3/4" x 3/8"	35,5	1 2/5	36	1 3/7			0,210
3/4" x 1/2"	35,5	1 2/5	36	1 3/7			0,195
1" x 1/4"	39	1 1/2	45	1 7/9			0,380
1" x 1/2"	39	1 1/2	45	1 7/9			0,350
1" x 3/4"	39	1 1/2	45	1 7/9			0,315
1.1/4" x 3/4"	39	1 1/2	55	2 1/6			0,465
1.1/4" x 1"	39	1 1/2	55	2 1/6			0,435
1.1/2" x 1/2"	39	1 1/2	60	2 3/8			0,670
1.1/2" x 3/4"	39	1 1/2	60	2 3/8			0,630
1.1/2" x 1"	39	1 1/2	60	2 3/8			0,580
2" x 3/4"	51	2	75	3			1,270
2" x 1"	51	2	75	3			1,140
2" x 1.1/2"	51	2	75	3			0,920