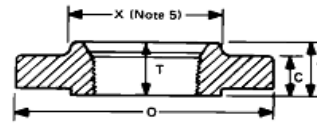
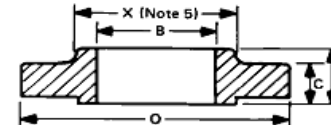


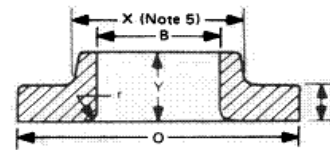
Dimensions and Flange specifications - 900 Lbs



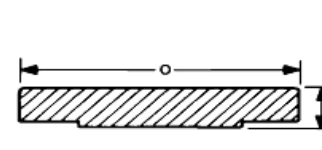
Threaded



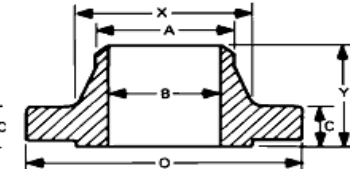
Slip On Welding



Lapped



Blind



Welding Neck

Dimensions Class 900 acc. to ASME / ANSI B16.5

Dimensions		Length through Hub							Bore					
Normal Pipe Size	Normal Pipe Size	Outside diameter of Flange	Thickness of Flange	Diameter of Hub	Hub diameter Beginning of Chamfer Welding Neck	Threaded Slip on	Lapped	Welding Neck	Thread Length Threaded Flange	Slip on	Lapped	Welding Neck (Std.)	Corner Radius of Bore of Lapped Flange and Pipe	Counter bore Threaded Flange
mm	inch	O	Min. C	X	A	Y	Y	Y	Min. T	Min. B	Min. B	B	r	Min. Q
15	1/2"													
20	3/4"													
25	1"													
32	1-1/4"													
40	1-1/2"													
50	2"													
65	2-1/2"													
Use Class 1500 dimension														
80	3"	240	38,3	127	89	54	54	102	42	90,5	91,5		10	92
100	4"	295	44,5	159	114,5	70	70	114	48	116	117		11	118

Dimensions			Length through Hub						Bore					
Normal Pipe Size	Normal Pipe Size	Outside diameter of Flange	Thickness of Flange	Diameter of Hub	Hub diameter Beginning of Chamfer Welding Neck	Threaded Slip on	Lapped	Welding Neck	Thread Length Threaded Flange	Slip on	Lapped	Welding Neck (Std.)	Corner Radius of Bore of Lapped Flange and Pipe	Counter bore Threaded Flange
mm	inch		Min.						Min.	Min.	Min.		r	Min.
		O	C	X	A	Y	Y	Y	T	B	B	B		Q
125	5"	350	51	190	141	79	79	127	54	143,5	144,5	To be	11	145
150	6"	380	56	235	168,5	86	86	140	57	170,5	171,5	specified	13	171
200	8"	470	63,5	298	219	102	112	162	64	221,5	222	by	13	222
250	10"	545	70	368	273	108	127	184	71	276	277,5	purchaser	13	275
300	12"	610	79,5	419	324	117	143	200	76	327	328		13	329
350	14"	640	86	451	355,5	130	156	213	83	359	360		13	360
400	16"	705	89	508	406,5	133	165	216	86	410,5	411		13	411
450	18"	785	102	565	457	152	191	229	89	462	462,5		13	462
500	20"	855	108	622	508	159	210	248	92	513	514,5		13	513
600	24"	1040	140	749	609,5	203	287	292	102	616	616		13	614